



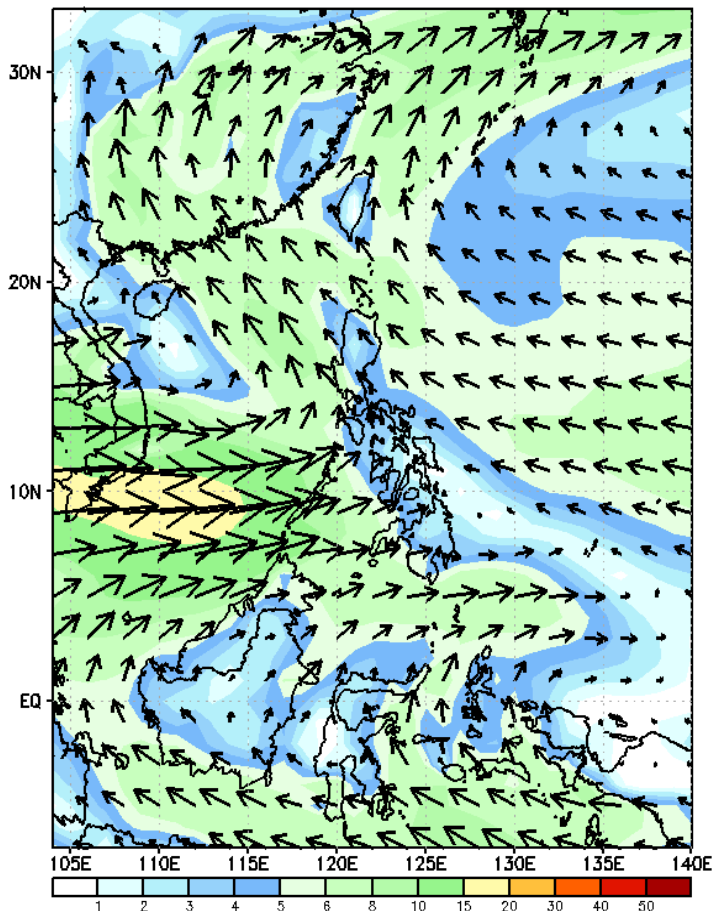
Week 1 & Week 2 Forecast for the Philippines using GEFS Model



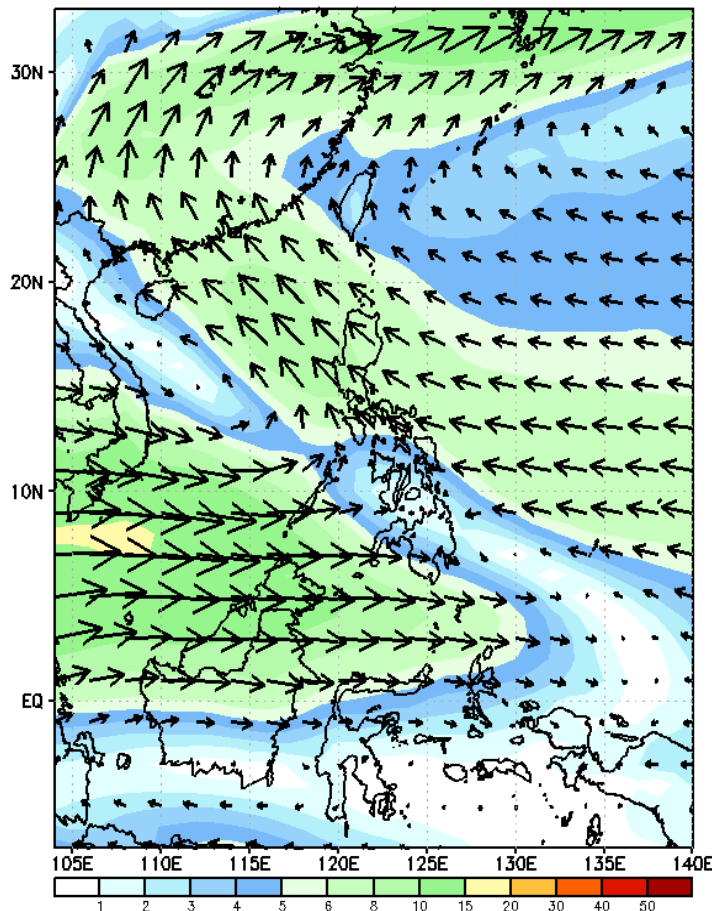
GEFS Week-1 Wind Forecasts:

Week 1: Jul 10-16, 2024

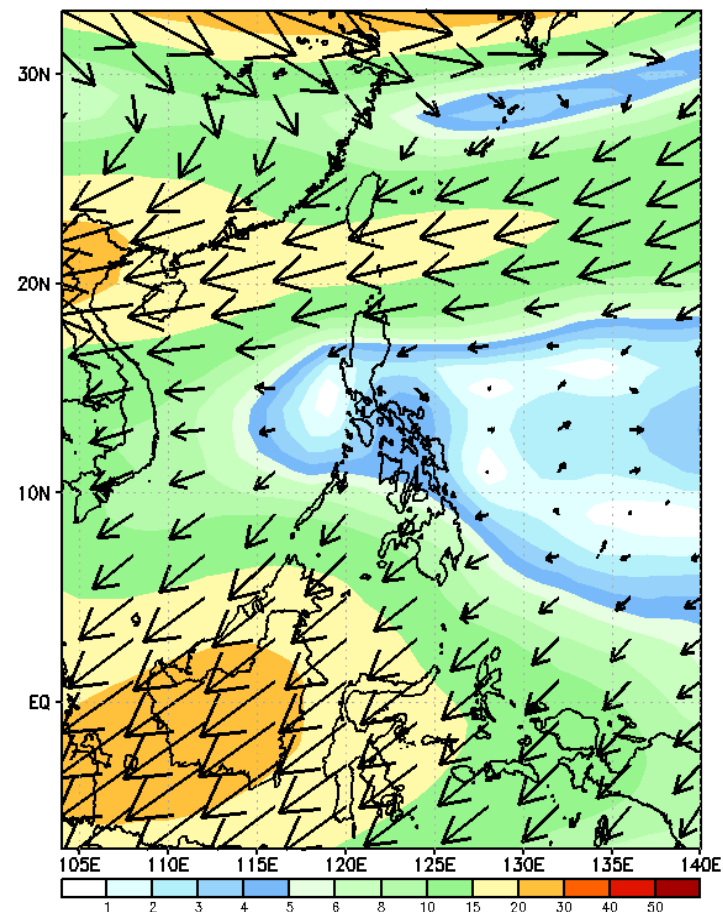
GEFS Week-1 850-hPa Wind Total
Valid: 20240710 - 20240716



GEFS Week-1 700-hPa Wind Total
Valid: 20240710 - 20240716

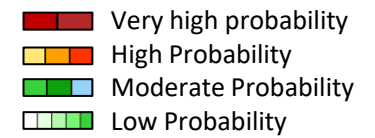


GEFS Week-1 200-hPa Wind Total
Valid: 20240710 - 20240716



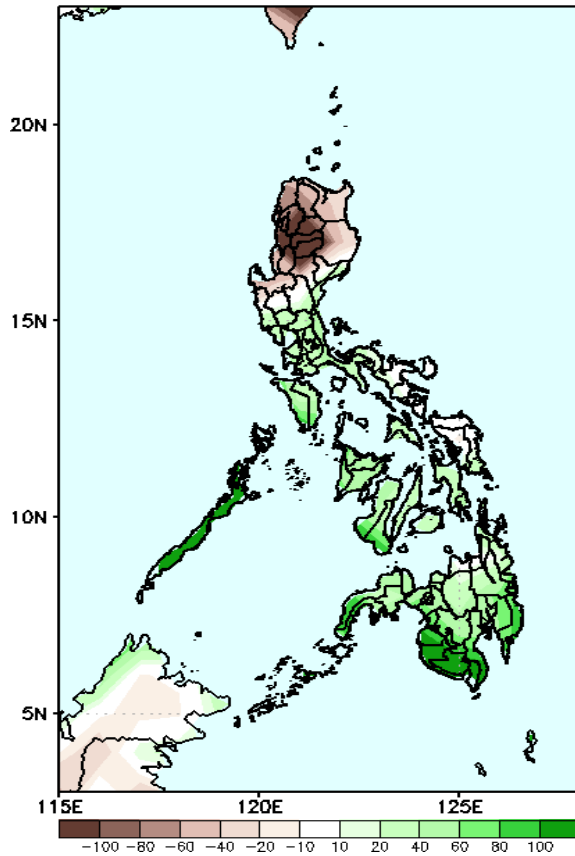
Southwest Monsoon affecting the western sections of the country; Easterlies affecting the rest of the country during the forecast period

Precipitation Anomaly and Exceedance Probability > 25/50 mm



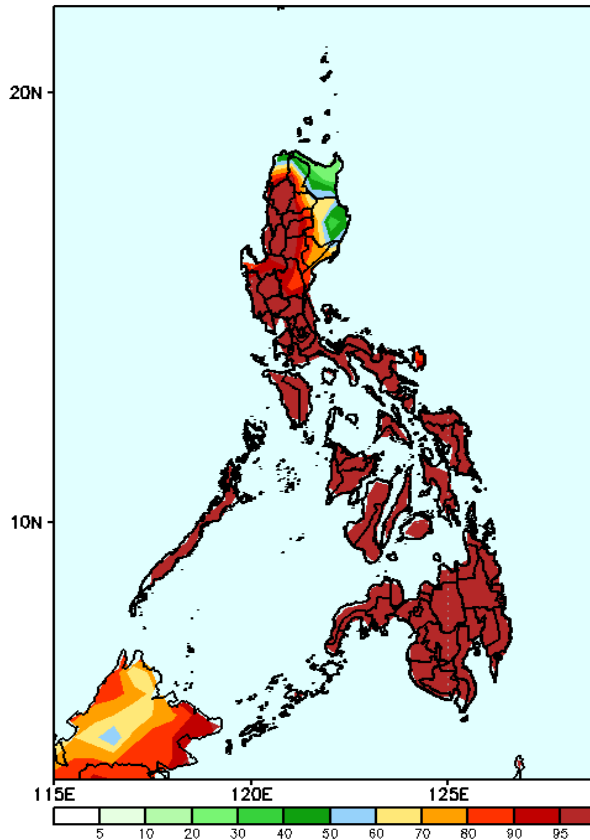
Week 1: Jul 10-16, 2024

GEFS Week-1 Precip Anomaly
Valid: 20240710 - 20240716



Rainfall deficit of more than 100mm in CAR; 20-60mm over the rest of Northern Luzon, while 40-100mm increase of rainfall will be likely for the rest of the country.

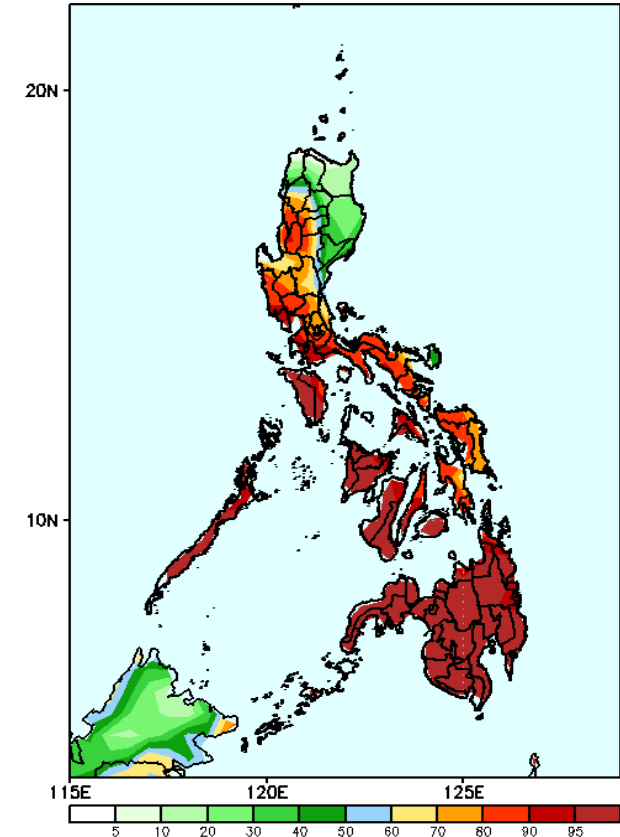
GEFS Week-1 Exceedance Prob. > 25mm
Valid: 20240710 - 20240716



Probability to Exceed 25mm

- High to very high over most parts of the country;
- Moderate to high over the northern portion of Ilocos Norte, Apayao and Isabela;
- Low to moderate over Cagayan.

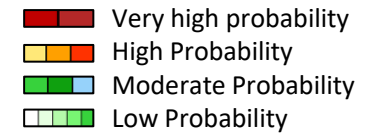
GEFS Week-1 Exceedance Prob. > 50mm
Valid: 20240710 - 20240716



Probability to Exceed 50mm

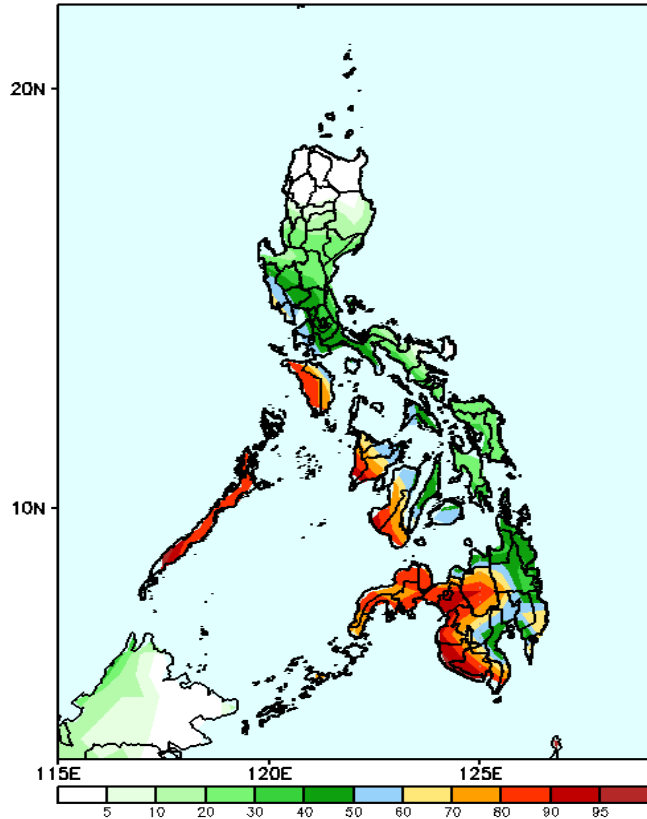
- High to very high over Southern Luzon, Visayas and Mindanao;
- Moderate to high over CAR, La Union, Nueva Vizcaya, Central Luzon and Catanduanes;
- Low to moderate over the rest of Luzon.

Exceedance Probability > 100/150/200 mm



Week 1: Jul 10-16, 2024

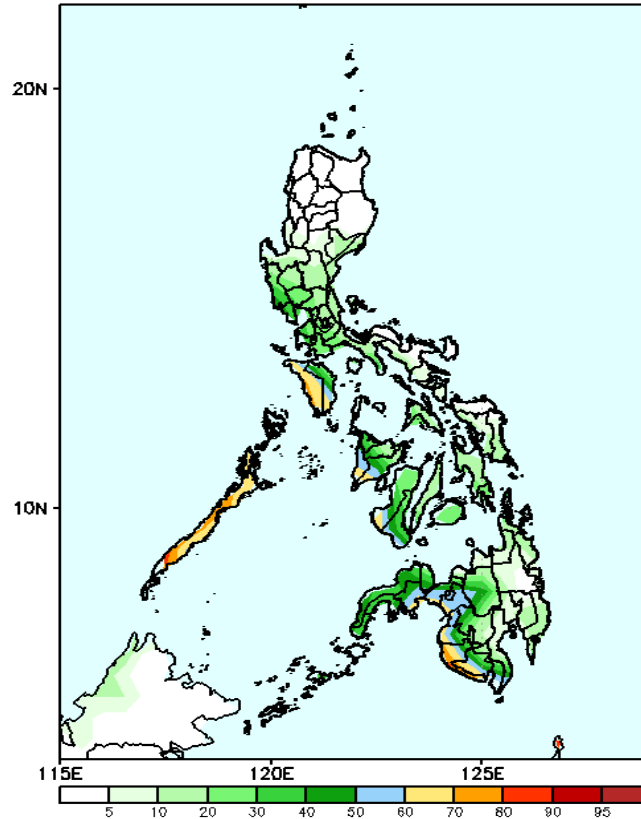
GEFS Week-1 Exceedance Prob. > 100mm
Valid: 20240710 - 20240716



Probability to Exceed 100mm

- Moderate to high over MIMAROPA, Panay and Negros Is. Regions and most of Mindanao;
- Low to moderate over Central Luzon and the rest of Southern Luzon and Visayas;
- Low over the rest of Luzon.

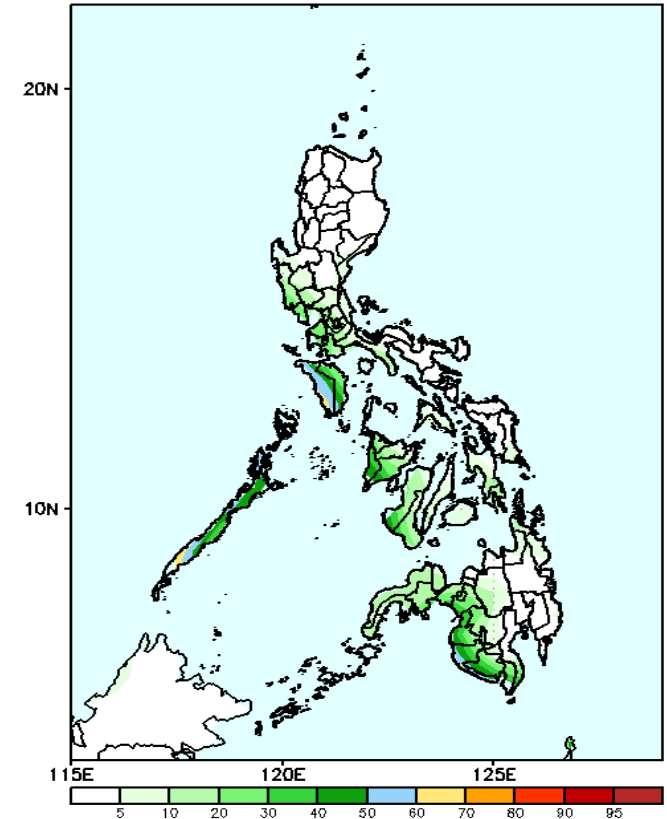
GEFS Week-1 Exceedance Prob. > 150mm
Valid: 20240710 - 20240716



Probability to Exceed 150mm

- Moderate to high over Mindoro Provinces, Palawan, western portions of Western Visayas and Negros Is. Region and Western Mindanao;
- Low to moderate over the rest of Visayas and Mindanao;
- Low over the rest of Luzon.

GEFS Week-1 Exceedance Prob. > 200mm
Valid: 20240710 - 20240716



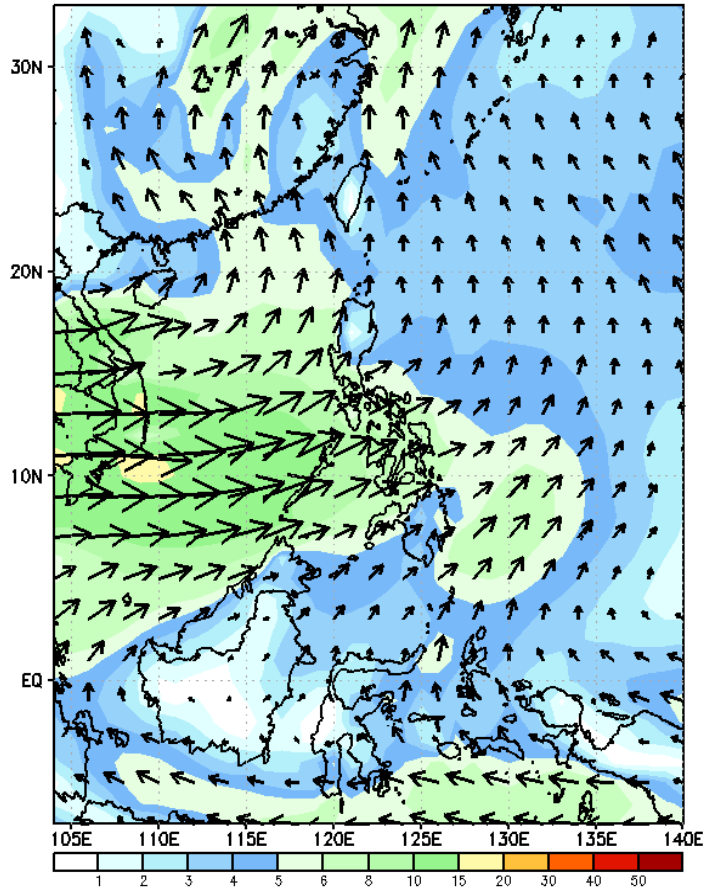
Probability to Exceed 200mm

- Moderate to high over Mindoro Occidental and Palawan;
- Low to moderate over the western sections of Visayas and Mindanao;
- Low over the rest of the country.

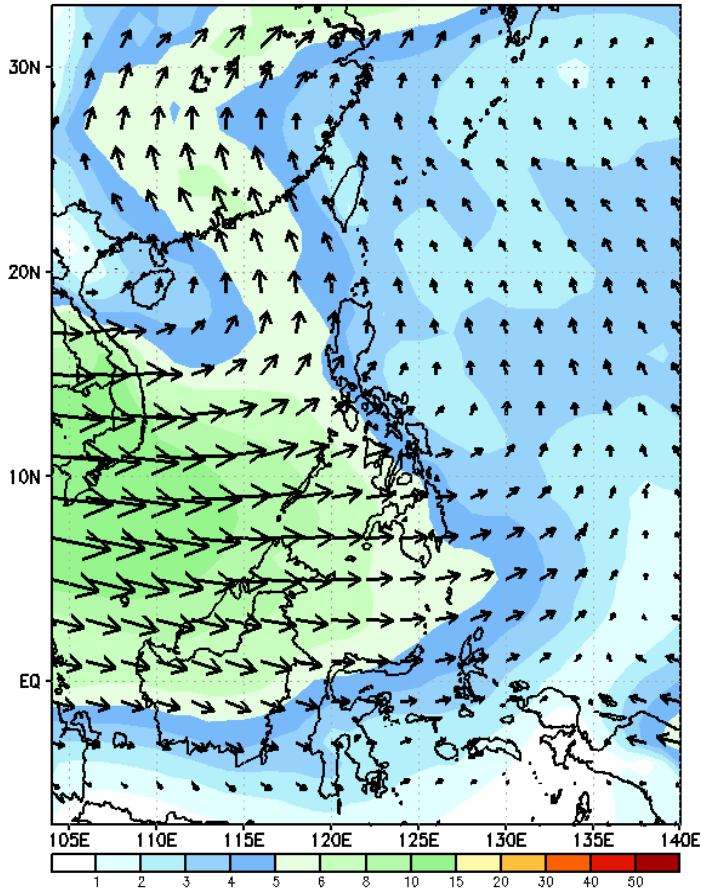
GEFS Week-2 Wind Forecasts:

Week 2: Jul 17-23, 2024

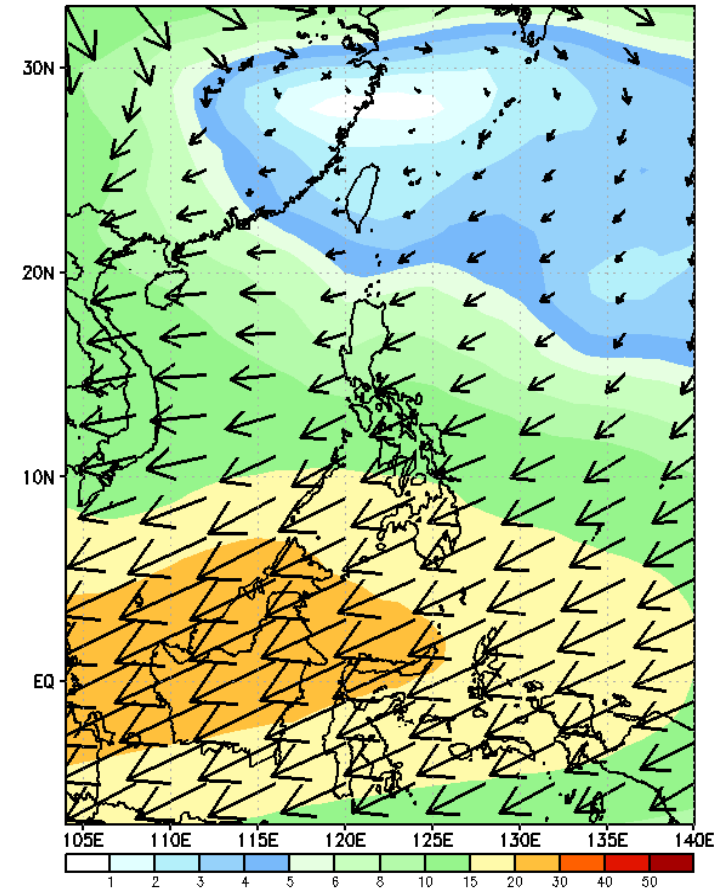
GEFS Week-2 850-hPa Wind Total
Valid: 20240717 - 20240723



GEFS Week-2 700-hPa Wind Total
Valid: 20240717 - 20240723

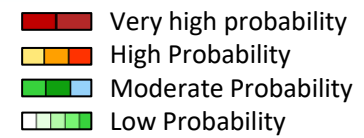


GEFS Week-2 200-hPa Wind Total
Valid: 20240717 - 20240723



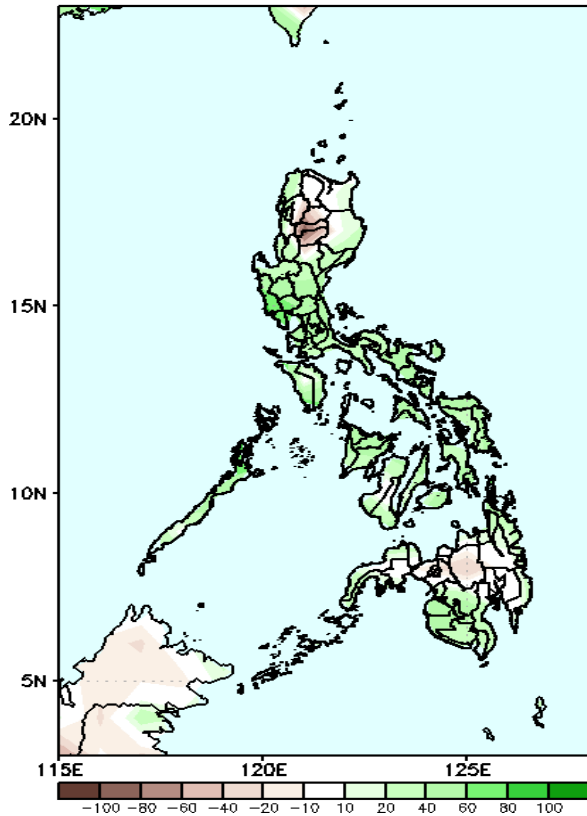
Southwest Monsoon affecting most parts of the country during the forecast period

Precipitation Anomaly and Exceedance Probability > 25/50 mm

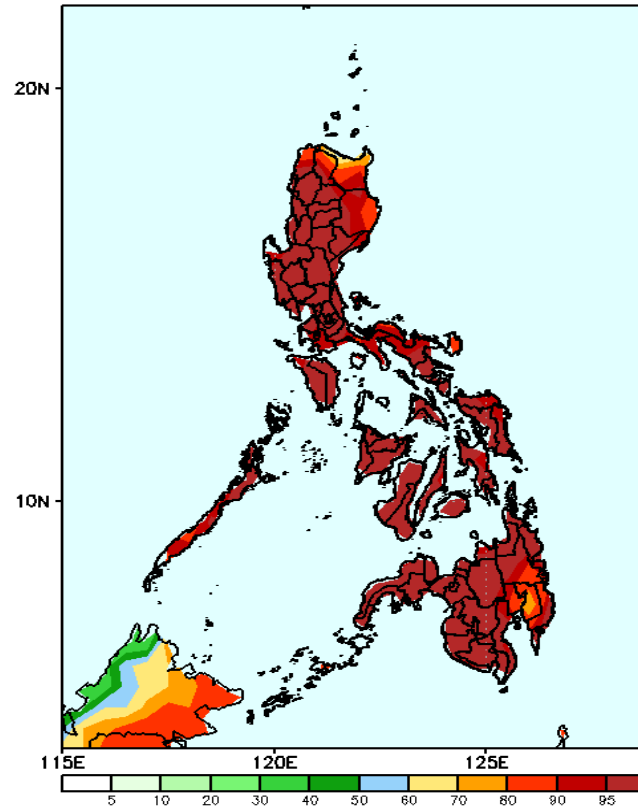


Week 2: Jul 17-23, 2024

GEFS Week-2 Precip Anomaly
Valid: 20240717 - 20240723



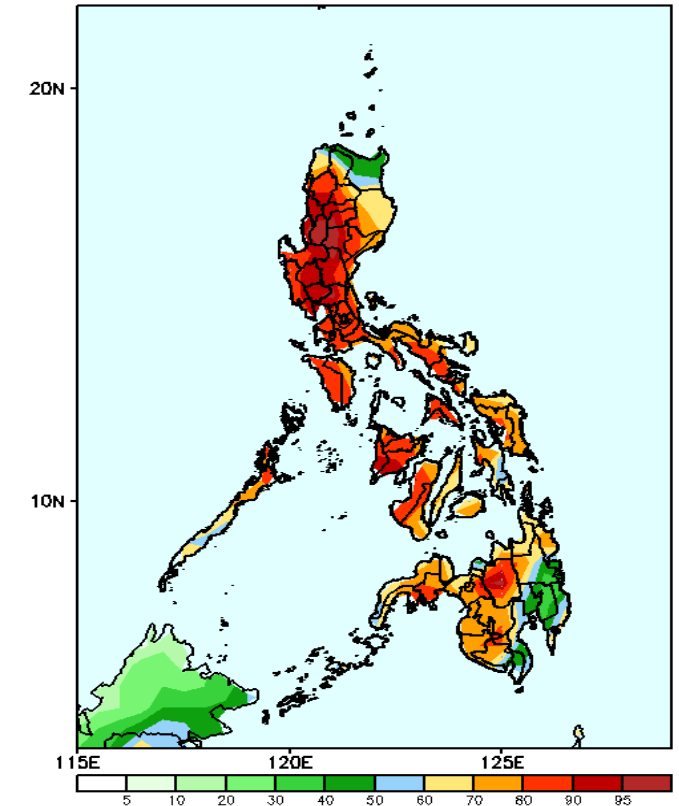
GEFS Week-2 Exceedance Prob. > 25mm
Valid: 20240717 - 20240723



Probability to Exceed 25mm

- High to very high across the country

GEFS Week-2 Exceedance Prob. > 50mm
Valid: 20240717 - 20240723

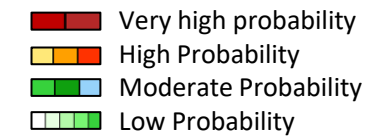


Probability to Exceed 50mm

- High to very high over most of Luzon and Western Visayas;
- Moderate to high over the rest of the country.

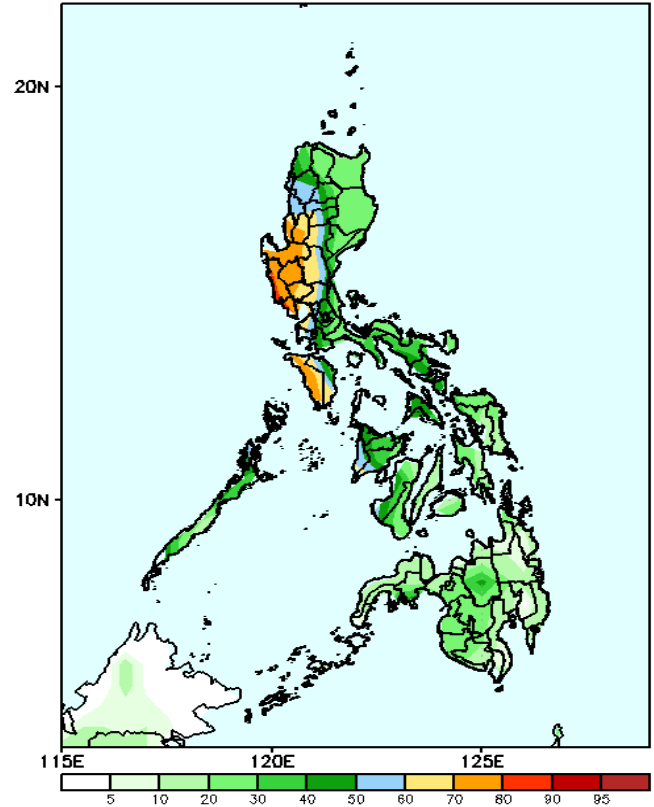
Increase of rainfall of 20-100mm in most parts of the country except in Abra, Kalinga, Mt. Province and Ifugao where 10-40mm rainfall deficit is expected.

Exceedance Probability > 100/150/200 mm

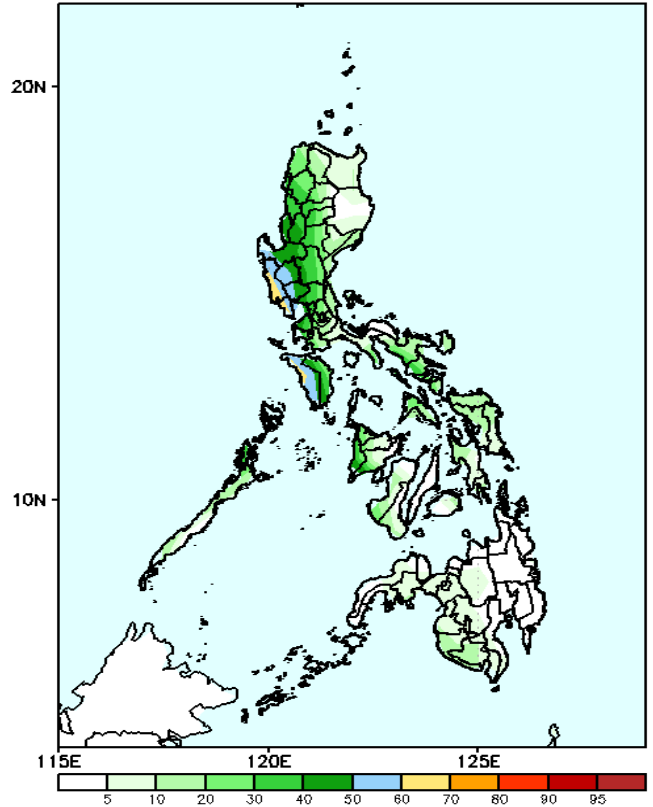


Week 2: Jul 17-23, 2024

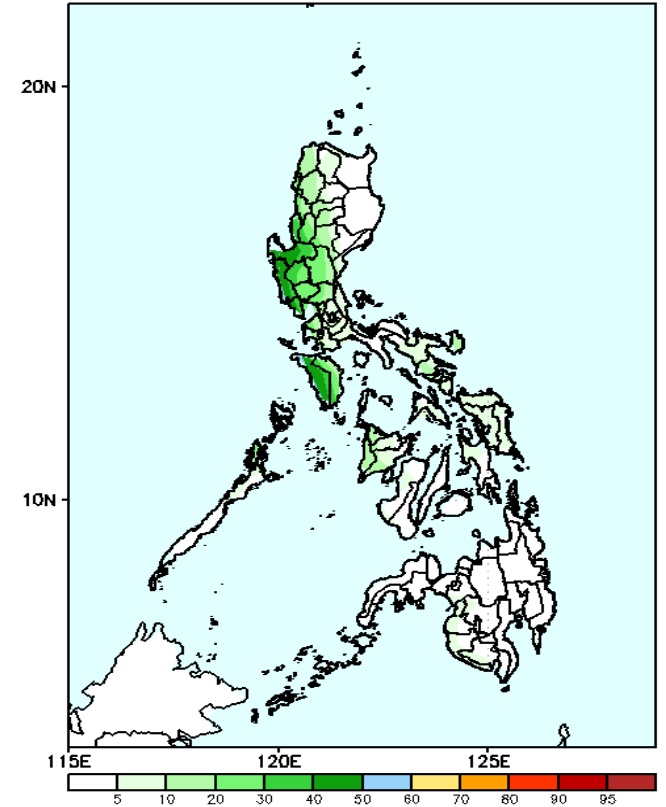
GEFS Week-2 Exceedance Prob. > 100mm
Valid: 20240717 - 20240723



GEFS Week-2 Exceedance Prob. > 150mm
Valid: 20240717 - 20240723



GEFS Week-2 Exceedance Prob. > 200mm
Valid: 20240717 - 20240723



Probability to Exceed 100mm

- Moderate to high over Benguet, Nueva Vizcaya, Central Luzon, NCR, Cavite, Batangas, Mindoro Provinces and Antique;
- Low to moderate over the rest of the country

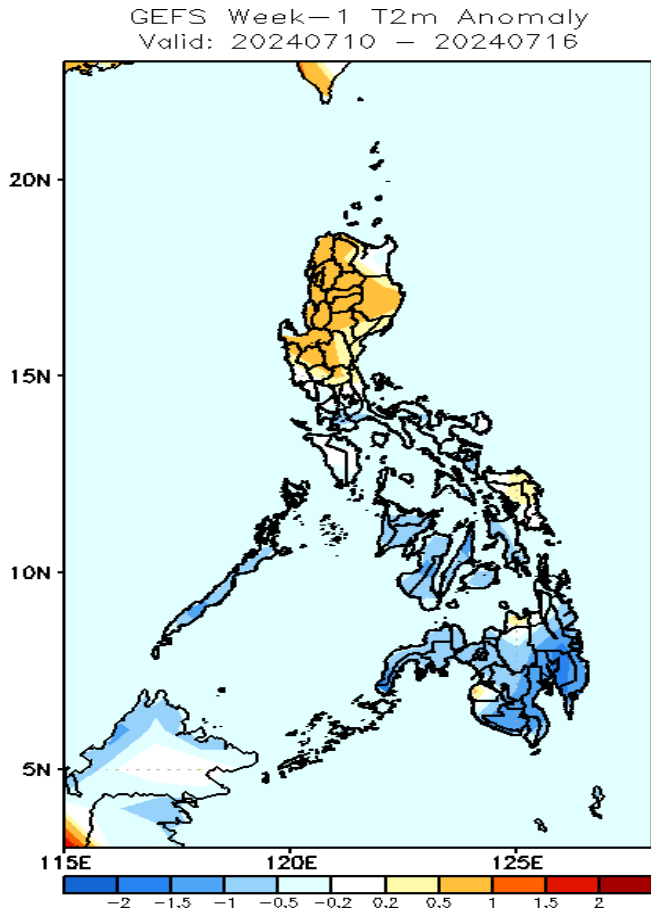
Probability to Exceed 150mm

- Moderate to high over Zambales, Bataan and Mindoro Occidental;
- Low to moderate over the rest of Luzon;
- Low over the rest of the country.

Probability to Exceed 200mm

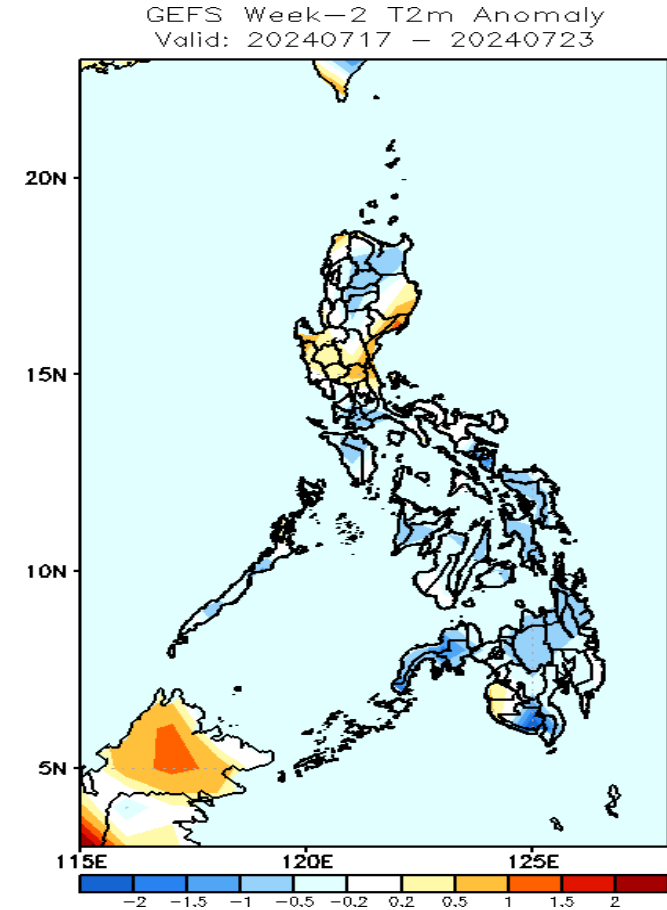
- Low to moderate over Zambales and Mindoro Occidental;
- Low over the rest of the country.

GEFS Week-1 & 2 Forecasts: T2m Anomaly



2m Temperature Week 1: Jul 10-16, 2024

Near to slightly warmer than average surface air temperature will likely be experienced in most parts of Luzon, Samar provinces, Misamis Oriental, and Maguindanao while the rest of Visayas and Mindanao will likely have near to cooler than average surface air temperature.



2m Temperature Week 2: Jul 17-23, 2024

Near to cooler surface air temperature will likely be experienced in most parts of the country except in Ilocos Norte, Isabela, Quirino, Pangasinan, Central Luzon, northern Quezon, Maguindanao and Sultan Kudarat where near to slightly warmer than average temperature is expected.